



ElastiFlow

*Zero to Ready:
Lightning Fast ElastiFlow
NetObserv Installation and
Setup*

Housekeeping Rules

- Use the Q&A feature to submit questions
- The recording and material will be shared with all participants
- Materials are also available in the resources section
- Poll questions will appear during the webinar; give us your insights
- For additional support or questions, send us an email at sales@elastiflow.com
- Please complete the survey at the end



Speaker



O.J. Wolanyk

- Senior Solutions Architect
- On a mission to make technology easy
- Location: San Diego

<https://www.linkedin.com/in/ojwolanyk/>

Agenda

ElastiFlow Overview

Topology

Installation

Dashboards Overview

Q&A

Summary

Poll 1

Do you currently have a flow solution?

i.e., Netflow / sFlow / IPFIX

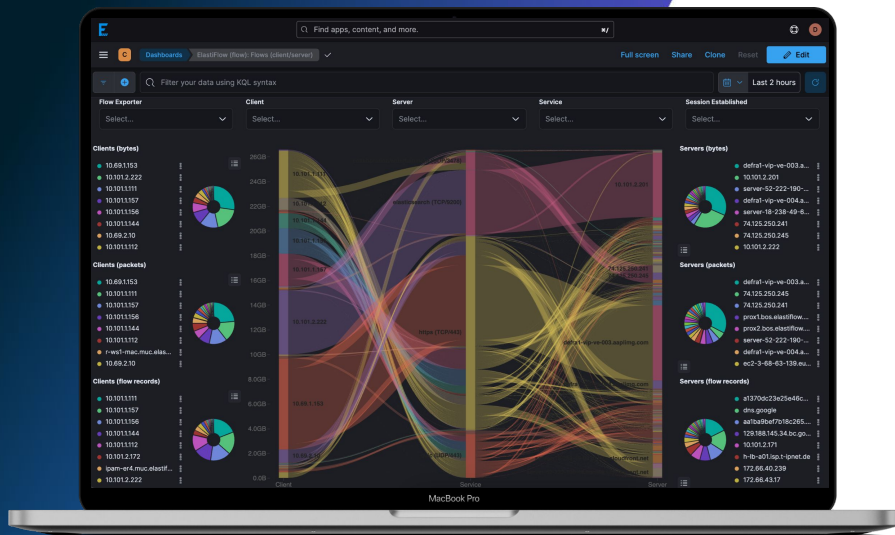
ElastliFlow Overview

NetFlow Use Cases

Performance & Availability

- Why is a service slow? (email, internet, cloud service, ...)
- Which applications are consuming the most resources?
- Which users are generating the most traffic?

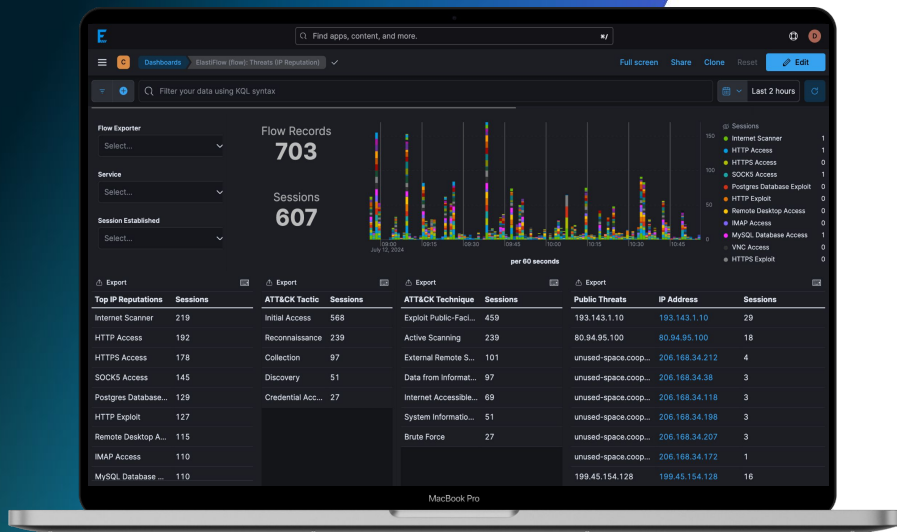




NetFlow Use Cases

\$ Cost Control

- Which users/apps cause cloud egress costs?
- Is my SD-WAN investment showing a benefit?
- Which resources are not utilized and where should I invest more?



NetFlow Use Cases

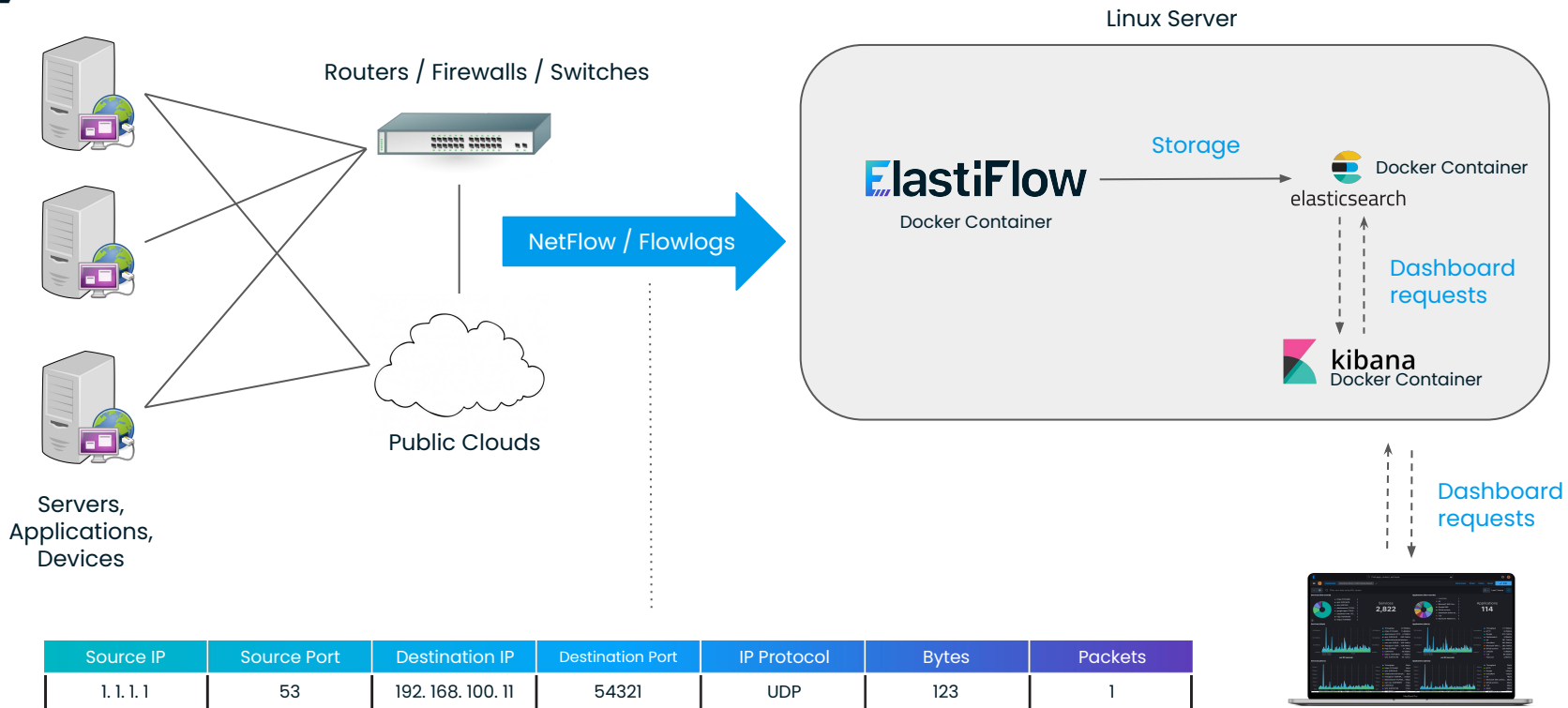


Security & Compliance

- Who is accessing a service? (critical apps, databases, restricted systems)
- Which users are accessing poor reputation sites?
- Are restricted services accessed externally?

Topology

Topology



Poll 2

What is your experience level with Elastic / Kibana?

Installation

Poll 3

What are your primary goals for network monitoring (e.g., security, bandwidth management, performance analysis)?

Q&A

O.J. Wolanyk
Senior Solutions Architect
oj@elastiflow.com

Summary

- ElastiFlow enables top notch network visibility **today**.
- You'll be able to address both netops and secops use cases.
- ElastiFlow helps drastically cut down mean to investigate and resolve.

- Ways to get involved
 - Join our [Slack community](#)
 - Get a [free 1-year basic license](#) and get started with NetObserv & NetIntel
 - Reach out to sales@elastiflow.com to schedule a demo and get more info

Thank you for attending!

Resources

- [Github source files and instructions](#)
- [Enrichment FAQ](#)
- [BONUS: ElastiFlow 2-step installation](#)
- [sFlow vs. NetFlow Blog](#)